

EMERGENCY SUPPORT FUNCTION 11 – AGRICULTURE ANNEX

I. PURPOSE:

ESF 11 provides protection for the state's food supply (sampling, testing and quality control) to ensure that victims of natural and technological emergencies and disasters are provided adequate and healthy nutrition. It is also concerned with diseases and infestations that could affect plant and animal species, and with animal evacuation, sheltering and health care.

II. SCOPE:

ESF 11 covers the whole range of nutritional assurance and plant and animal health and safety in all types of natural and technological threats.

III. CONCEPT OF OPERATIONS:

The Department of Agriculture and Forestry has the Primary Responsibility for Agriculture related emergencies and disasters.

A. MITIGATION:

The Commissioner of Agriculture will designate an ESF 11 Agriculture Coordinator to organize and administer the ESF.

B. PREPAREDNESS:

1. The ESF 11 Coordinator will develop plans, procedures, arrangements and agreements to identify, acquire and mobilize agricultural, nutritional and animal related resources for emergencies and disasters.
2. The ESF 11 Coordinator will develop and maintain information and liaison with agriculture, nutritional and animal related resources in local, parish, state government, federal government, private industry and volunteer organizations that could furnish assistance in an emergency or disaster.

C. RESPONSE:

1. When an emergency arises, the ESF 11 Coordinator will activate and mobilize agricultural personnel, facilities and material resources.
2. The ESF 11 Coordinator will assess the status of plant and animal health in the state and determine whether any diseases, infestations or infections threaten the state's food supply and domestic and wild animal life. In the

event that the food supply is threatened, the Coordinator will direct all available resources to deal with the threat.

3. The ESF 11 Coordinator will work with ESF 6 Coordinators to ascertain and meet the nutritional needs of people in shelters and temporary housing, and of emergency workers in all areas.
4. When mass evacuations occur, the ESF 11 Coordinator will work with animal planning authorities to arrange for the best available shelter and care for evacuated animals of all kinds.

D. RECOVERY:

Agriculture activities will continue as long as necessary after the conclusion of the emergency or disaster. The ESF 11 Coordinator will continue to gather information on the restoration of the health and abundance of plant and animal life to acceptable limits.

IV. ORGANIZATION AND RESPONSIBILITIES:

- A. The Department of Agriculture and Forestry has the Primary Responsibility for providing and coordinating nutritional and plant and animal health and sufficiency.
- B. The Support Agencies for ESF 11 Agriculture are responsible for developing and maintaining plans, procedures and asset inventories to support the Primary Coordinator. Support Agencies include, but are not limited to:
 - C. Support Agencies:
 1. The Louisiana National Guard:
 - a. Provide assistance with quarantine, disposal and live animal movement in order to prevent the spread of contagious disease.
 - b. Provide emergency responders and emergency equipment to assist with security and traffic control issues.
 2. The Department of Culture, Recreation and Tourism:
 - a. Allow use of the Welcome Center as a staging area and information center for people evacuating with animals.
 - b. Provide emergency responders (90 officers at present) and vehicles (ATV's, boats etc.) to assist with the disaster response.
 - c. House and coordinate relocation of evacuees in the CRT facility if needed.
 3. The Department of Environmental Quality:
 - a. Provide technical assistance in determining acceptable locations for carcass disposal, cleaning and disinfection stations and waste treatment sites.
 - b. Assist with air quality monitoring during burning of carcasses.

- c. Report any radiological contamination of food, water or soil, and recommend procedures for handling contamination.
 - d. Provide public education with regard to environmental rules and regulations.
- 4. Department of Health and Hospitals:
 - a. Coordinate human evacuation shelter numbers with evacuating pet numbers to allow proper movement and shelter of animals
- 5. The Department of Natural Resources:
 - a. Assist with carcass removal and disposal.
 - i. Coordinate with NRCS and LDAF for proper methods that meet emergency and environmental standards
 - b. Assist in water channel cleanup and assessment via Damage Survey Teams.
- 6. The Board of Regents:
 - a. Assist with livestock assessment, staging area setup, and basic husbandry concepts as needed.
 - b. Assist in coordination of out of state resources for livestock management (feed, hay etc.)
 - c. Develop an education plan to inform animal owners about disaster preparedness.
 - d. Assist in assessing agricultural losses garnered during the disaster.
- 7. Department of Transportation and Development:
 - a. Provide transportation needs as required by Act 615
- 8. Department of Wildlife and Fisheries:
 - a. Assist with disease surveillance and detection via migratory bird and wildlife observation.
 - b. Activate officers statewide to assist in the disaster relief plan.
 - c. Assist in animal evacuation and disposal of carcasses with their vehicle resources.
 - d. Assist with state and federal urban search and rescue efforts as they involve animal issues
- 9. Additional Government Agencies:
 - a. USDA Farm Service Agency:
 - i. Assist with debris removal from affected farm land.
 - ii. Assist with re-fencing of affected farm land.
 - iii. Provide a list of contacts (complete with GIS mapping in the future) that will allow for ease of contacting agricultural producers.
 - b. National Agricultural Statistics Services (NASS):
 - i. Provide maps that outline animal concentrations in the parishes. This list excludes exotic birds.
 - ii. Assist with post disaster assessments
- 10. Volunteer Organizations Active in Disasters (VOAD):
 - a. Louisiana Veterinary Medical Association & LA State Animal Rescue Team (LSART):

- i. Educate volunteers on protocols for shelter maintenance and animal care.
 - ii. Coordinate the activities involved in maintaining animal friendly shelters for evacuees with pets.
 - iii. Rescue and care for animals affected by the disaster.
- b. Louisiana Cattlemen's Association
 - i. Coordinate with farmers and ranchers on disaster education and preparation
 - ii. Work with LSU and Southern Agricultural Extension Agents to coordinate education and disaster relief
 - iii. Coordinate cattle transportation methods.
 - iv. Coordinate post emergency care, including feeding, fencing and other animal husbandry needs of farm animals

V. COMMAND AND CONTROL:

Command and control will be exercised as provide in the Basic Plan.

VI. CONTINUITY OF GOVERNMENT:

Continuity of government will be as provided in the Basic Plan.

VII. ADMINISTRATION AND LOGISTICS:

- A. If state resources are inadequate to the tasks assigned, the ESF 11 Coordinator will report the situation and the needs to GOHSEP, which will seek additional resources from EMAC and from the federal government pursuant to a Presidential Disaster Declaration.
- B. Every agency providing Agriculture support will maintain records of the operations, including cost records that can be used after the emergency to obtain reimbursement from state or federal sources.

VIII. PLAN MAINTENANCE:

The ESF 11 Coordinator is responsible for developing, maintaining and coordinating plans, procedures, arrangements and agreements in support of this ESF.

IX. AUTHORITIES AND REFERENCES:

Authorities and references are included in the Basic Plan.

Appendix 1
ESF –Agriculture Responsibility Chart

Agency support to the LDAF

	Animal Health	Animal Evacuation & Sheltering	Animal Disease, Detection & Control	Safety of Food and Safety of Food Supply	Forestry	Soils	Water	Education	Security	Agriculture Environmental Services Pesticides, AgChemistry, Horticulture & Seed
State Police/Hazmat		x	x	x				x	x	
LA National Guard	x	x	x	x						x
Sheriff Departments			x						x	
DEQ			x	x		x	x	x		x
DHH		x								x
Culture, Recreation & Tourism	x	x								x
DNR						x	x			x
Board of Regents (LSU and Southern Ag Center and LSU SVM)	x	x	x	x	x	x	x	x		x
DOTD		x						x	x	x
WLF	x	x	x	x	x	x	x		x	x
VOAD (LVMA SART)	x	x	x					x		
Federal Aviation Administration									x	x
EPA										x
Local Governmental Authority										x
Private HAZMAT Teams										x
Private Contractors										x
Private Industries										x
USDA APHIS VS	x	x	x					x		x
USDA NASS				x						
USDA PPQ						x	x			x

X. APPENDICIES:

1. ESF 11 Responsibility Chart
2. State — Federal Crosswalk
3. Animal Management in Disasters-LSART Manual
4. Management of Foreign Animal Disease and Bioterrorism in Livestock
5. Plant Management in Disasters and Plant Bioterrorism
6. Forestry Management in Disasters

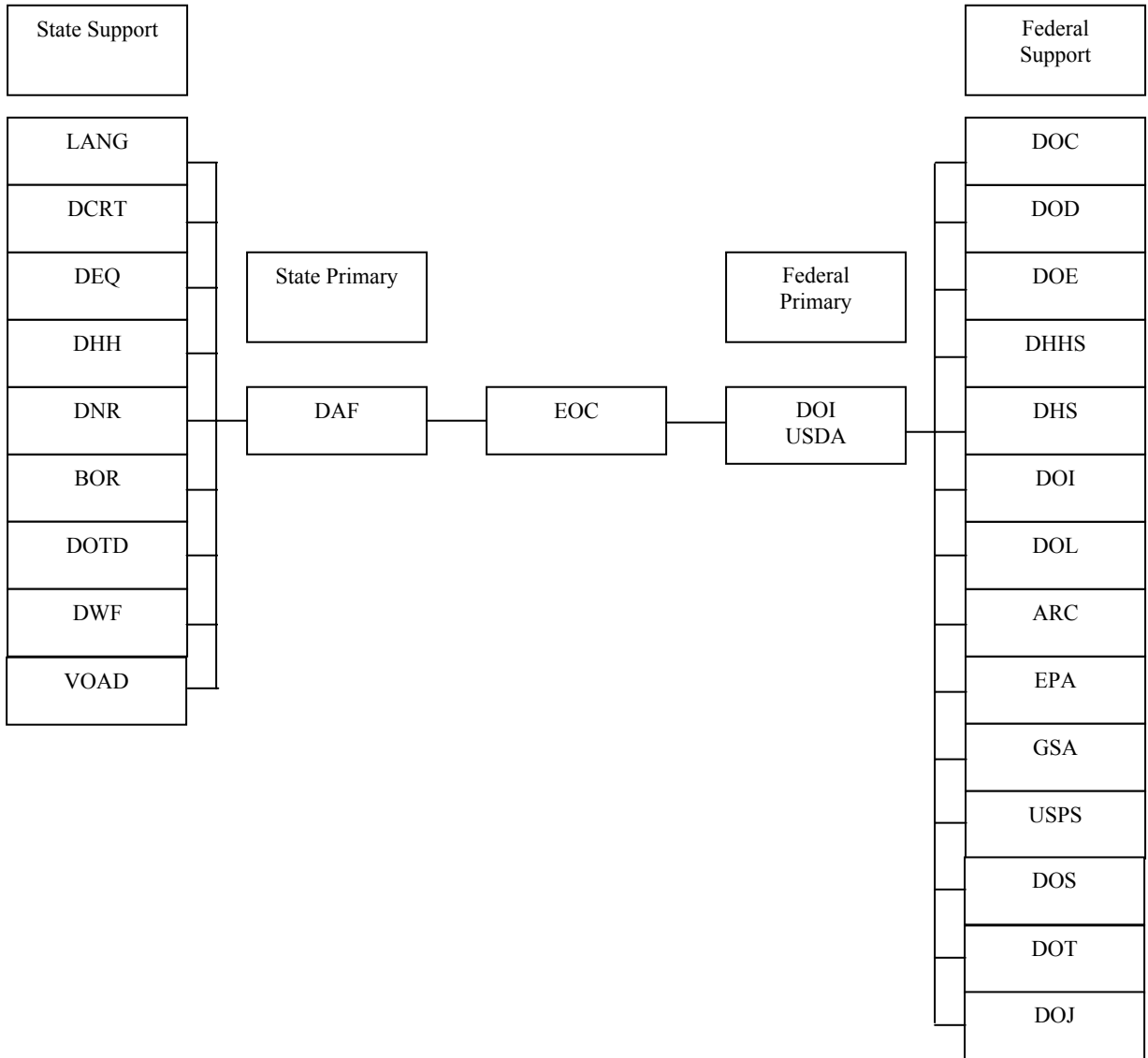
This page intentionally left blank.

I. DELETED PAGE

II. APPENDIX 1 – ESF 11 – AGRICULTURE RESPONSIBILITY CHART

Agency support to the Louisiana Department of Agriculture	Food Safety	Animal Health	Animal Evacuation & Sheltering	Animal Disease Detection and Control	Food Supply
Louisiana National Guard					X
Department of Culture, Recreation & Tourism		X	X		
Department of Environmental Quality	X			X	
Department of Health and Hospitals	X			X	
Department of Natural Resources	X				
Board of Regents	X	X	X	X	X
Department of Transportation and Development					
Department of Wildlife & Fisheries	X	X	X	X	
Volunteer Organizations *	X	X	X	X	X
* To include private relief organizations (i.e. American Red Cross, Salvation Army, Mennonite Disaster Service, etc.); private industry; professional associations and participants in mutual aid agreements, etc.					

III. APPENDIX 2 – ESF 11 – AGRICULTURE STATE-FEDERAL CROSSWALK



IV. APPENDIX 3 – ESF 11 – ANIMAL MANAGEMENT IN DISASTERS

I. PURPOSE

The purpose of this supplement is to provide guidelines for rapid response to disasters affecting the health, safety, and welfare of human beings and animals. Veterinary medicine and animal care resources in emergency preparedness, response, and recovery include, but are not limited to, small and large animal care, facility usage, and displaced companion animals/livestock assistance.

II. SITUATION AND ASSUMPTIONS

A. Situation

1. The State of Louisiana may be subject to severe damage as a result of hurricanes, tornadoes, floods, fires, winter storms, drought, explosions, nuclear accidents, hazardous material spills, structure collapse, riots, terrorism, transportation accidents, and outbreaks of contagious disease.
2. Public health during disasters is directly related to the safety of animals. Owners may fail to evacuate because they cannot take their animals with them, or owners who left their animals behind will later try to reenter the disaster area to rescue them. The human-animal bond extends to livestock and equine owners.
3. Deceased animals may create a threat to the public health and safety.
4. It is not unusual for pet owners to suffer grief and other psychological trauma including guilt feelings if pets must be abandoned during disasters. Availability of proper shelter, food, and water for companion animals and livestock is important to the well being of human refugees.

B. Assumptions

1. Through public education, animal owners will know how to prepare their animals for a disaster situation.
2. By providing shelters for animals, human lives will be saved.
3. Veterinarians and LSU and Southern AgCenter Extension personnel residing in each parish are the first responders to emergencies involving animals or animal food products in their communities. Animal control personnel and humane society volunteers augment their services.
4. If an emergency incapacitates local veterinary and animal care resources or if such resources are found to be insufficient to meet animal care needs,

resources will be requested from adjoining areas. When area resources have been exhausted, assistance can be requested from the State. If the disaster or emergency is of such magnitude to cause a federal response of activating the National Disaster Medical System, the Veterinary Medical Assistance Team (VMAT) and other resources will augment local resources.

III. CONCEPT OF OPERATIONS

A. Mitigation

1. All animal related entities, whether federal, state or local should maintain a program aimed at educating the public on reducing disaster impacts on animals.
2. Animal control shelters, humane society groups, the LSU School of Veterinary Medicine, laboratory animal research facilities, zoological and wildlife parks, and marine animal aquariums will be encouraged to develop emergency procedures and evacuation plans for the animals in their care.

B. Preparedness

1. Develop an organizational structure, chain of command, and outline of duties and responsibilities of veterinarians in Louisiana involved in implementation of the response to a disaster or major emergency.
2. Maintain a current directory of veterinarians by parish and survey the veterinary community for those willing to help in a disaster or major emergency.
3. Veterinary disaster services and animal care disaster activities will be incorporated into emergency operations plans.
4. Mutual aid agreements will be reviewed annually. Any new agreements will be disseminated to the appropriate parties.
5. Maintain a list of structures available for use to house animals.
6. Encourage participation in exercises and training. Levels of training and certification for inclusion on emergency response teams will be maintained.

C. Response

1. Major Disaster (natural or technological)

Veterinarians, animal control personnel and humane society volunteers will:

- a. Coordinate with the State Veterinarian and local government
- b. Coordinate with animal related organizations and individuals to provide assistance to jurisdictions in need
- c. Coordinate with the Louisiana Shelter Task Force on the sheltering of companion animals

2. Animal Disease Outbreak

In the event of a disease outbreak in the livestock of horse community, LDAF will follow pre-established guidelines, i.e., identification of disease, quarantine, etc.

D. Recovery

1. Injuries and death of animals will be documented.
2. Deceased, diseased or contaminated animals will be disposed.
3. Documentation of all expenses incurred will be maintained.
4. Continue response activities as needed.

IV. ORGANIZATION AND ASSIGNMENT OF RESPONSIBILITIES

A. Louisiana Department of Agriculture & Forestry, Office of Animal Health Services, State Veterinarian

1. The State Veterinarian will be the primary state official for coordinating veterinary and voluntary services needed in animal emergencies.
2. Coordinate with the GOHSEP Public Information Officer on all press releases and public service announcements concerning animal issues. It is understood that this means the LDAF Public Information Officer.
3. The State Veterinarian with help from the USDA Natural Resources Conservation Services will determine the disposition of dead, diseased or contaminated animals. Other agencies may assist by providing necessary information or resources.

4. Communicate with and coordinate recognized animal health care responders.
 5. Coordinate shelter issues with the Louisiana Shelter Task Force in the event of a large scale evacuation.
 6. In the event of a disease outbreak, the State Veterinarian and the Federal counterpart, the USDA:APHIS:VS Area Veterinarian in Charge (AVIC), will be Incident Commanders using the Incident Command System.
 7. Be the primary credentialing agency for all people concerned or involved in working any type of agricultural and/or animal emergency or disaster.
- B. Louisiana Veterinary Medical Association
1. Organize State Animal Response Teams (SART).
 2. Coordinate press releases with the state veterinarian's office and GOHSEP.
 3. Maintain list of volunteer veterinarians who are willing to assist in emergency response situations.
 4. Coordinate emergency and disaster training for veterinarians, animal control personnel and humane association volunteers.
- C. Louisiana Department of Health and Hospitals (DHH)
- The State Veterinary Epidemiologist will act as liaison between DHH, the State Veterinarian and all other agencies involved in animal care emergency response in a disaster when human health is at risk.
- D. Louisiana Department of Environmental Quality
- The Department of Environmental Quality will coordinate with representatives of LDAF, U.S.D.A.'s Natural Resources Conservation Services, and DHH in determining the disposition of dead, diseased or contaminated animals.
- E. U. S. Department of Agriculture (USDA)
1. The Area Veterinarian in Charge or his/her designate of the U. S. Department of Agriculture:Animal Plant Health Inspection Service:Veterinary Services will coordinate with the State Veterinarian in the decision making process involving livestock and poultry during an animal related emergency.

2. In the event that a federal response to an animal disaster occurs, the Area Veterinarian in Charge coordinates all actions within the State with the Federal response teams.
- F. Louisiana Animal Control Association
1. Appoints or serves as liaison between Louisiana Animal Control Association, Louisiana Veterinary Medical Association and the Louisiana humane associations.
 2. Coordinates all rescue and relief efforts for animals currently under their care.
- G. Louisiana Humane Associations and other humane groups
- Coordinates any animal rescue/relief efforts with the State Veterinarian.
- H. Louisiana Department of Wildlife and Fisheries
1. Manages and regulates the indigenous wildlife and fish resources of Louisiana. This authority may extend to extraordinary management and regulatory measures as may be needed during times of emergency or disaster.
 2. Aids in pet rescue as it involves urban search and rescue activities post disaster or emergency.
- I. Board of Regents

Both LSU and Southern AgCenters coordinate animal activities with the State Veterinarian. The people of the state look to the AgCenters as a principle educator for the public in planning for and during an emergency or disaster. The School of Veterinary Medicine functions primarily as an emergency hospital for animal care.

V. DIRECTION AND CONTROL

The Louisiana Department of Agriculture and Forestry is the primary organization for coordination and direction and control of veterinary services in emergencies.

- A. The State Veterinarian will contact the President of the Louisiana Veterinary Medical Association or its Executive Director and request the activation of the State Animal Response Team.
- B. The State Veterinarian will alert the USDA:APHIS:VS Area Veterinarian in Charge (AVIC) that the Team has been activated.

VI. CONTINUITY OF GOVERNMENT

Line of succession for EOC representation will be determined by the Louisiana Department of Agriculture and Forestry.

VII. ADMINISTRATION AND LOGISTICS

The effectiveness of this plan will rely heavily on the volunteer community. Therefore, Memorandums of Understanding will be developed, maintained, and updated.

VIII. PLAN DEVELOPMENT AND MAINTENANCE

The review and update of this appendix is the responsibility of the Louisiana Department of Agriculture and Forestry in coordination with the veterinary community as well as animal related organizations. This plan will be exercised annually in conjunction with the annual hurricane exercise held by the Governor's Office of Homeland Security and Emergency Preparedness.

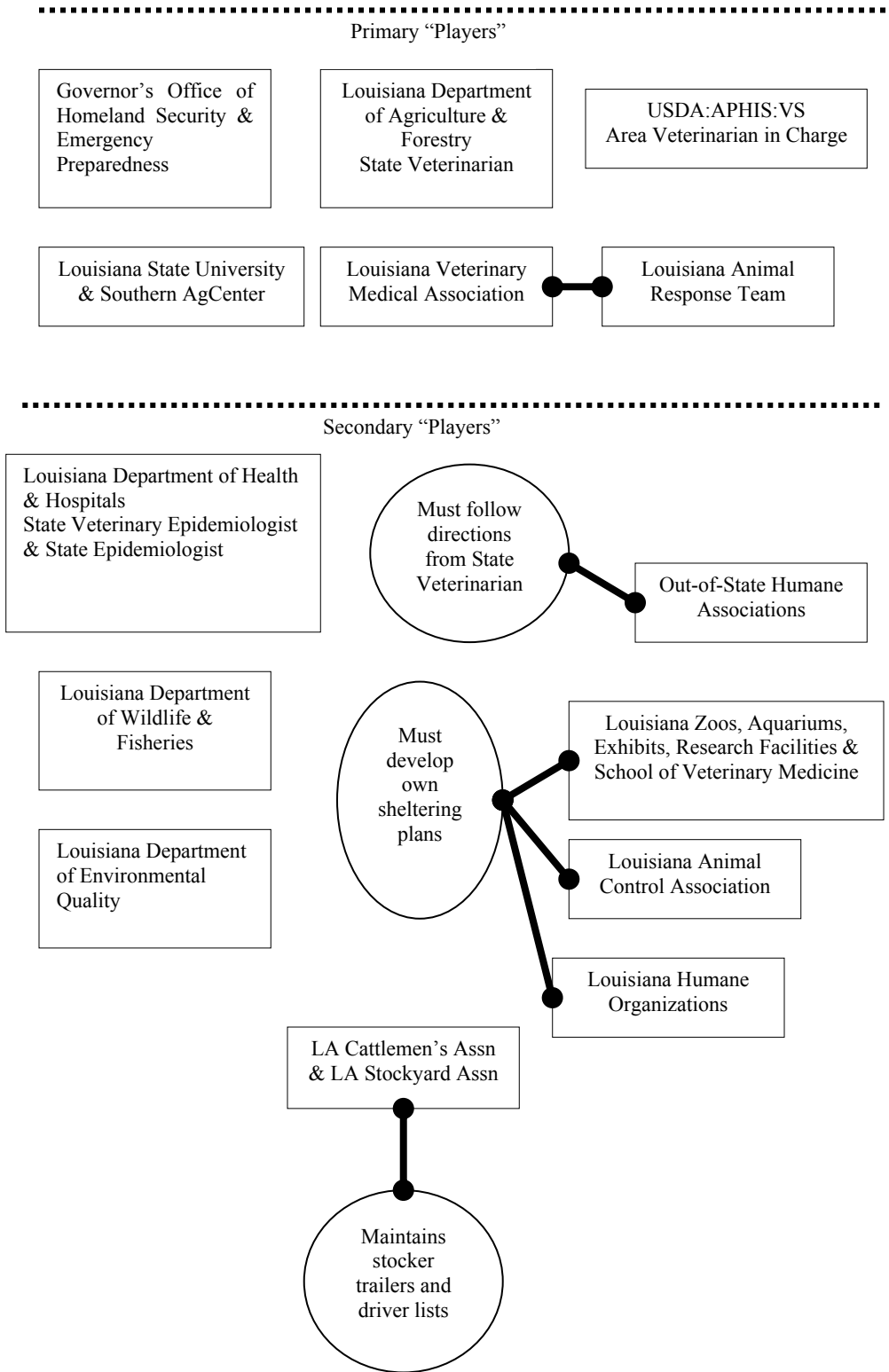
IX. TABS

A. Response Chart

This page intentionally left blank.

TAB 1 – Response Chart

Louisiana Animal Emergency Response Chart



Louisiana Pet Evacuation Plan

**DEPARTMENT OF
AGRICULTURE & FORESTRY**

BOB ODOM, COMMISSIONER



**OFFICE OF ANIMAL
HEALTH SERVICES**

State Evacuation Plan for 7,500 dogs & cats.

The total number of pets in the 3 regions, Southeast, Southcentral and Southwest Louisiana, is based on the total human population that **requires** sheltering, figuring in the households, 70% households having pets, 1.5 pets per household (~11% of the households will require assistance evacuating). Parish assisted evacuation is defined as “Parish arranges transportation for their people and pets to a specific point (Parish Pick up Point (PPP)) and the state moves those people and their animals from that point to a shelter.” Special needs citizens in the population requiring transportation in the 12 costal parishes are addressed at the end of this plan. Our goal is to provide evacuation and sheltering resources for a maximum of 7,500 pets using ESF-11 and our partnering emergency support function agencies. While this is primarily focused on hurricane emergencies, the components of this State Evacuation Plan can be modified for any region of the State.

Southeast Louisiana

1. Assumptions:
 - a. Orleans-10,220 pets
 - b. Jefferson-31,752 pets
 - c. Plaquemines-1,145 pets
 - d. St. Benard-799 pets
 - e. St. Tammany-11,914 pets
 - f. Total pets in Southeast Louisiana that need evacuation: 55,830 pets
 - g. Total pets in Southeast Louisiana that can be transported and sheltered: 7,500 pets
 - h. Parish assisted evacuation sheltering deficient (gap): 48,330 pets

Southcentral Louisiana

1. Assumptions
 - a. Lafourche-4,957 pets
 - b. Terrebone-5,138 pets
 - c. St. Mary-2,405 pets
 - d. Iberia-3,313 pets
 - e. Vermillion-2,328
 - f. Total pets in Southcentral Louisiana that need evacuation: 18,141 pets
 - g. Total pets in Southcentral Louisiana that can be transported and sheltered: 7,500 pets
 - h. Parish assisted evacuation sheltering deficient (gap): 10,641pets

Southwest Louisiana

1. Assumptions
 - a. Chitamacha-18 pets
 - b. Iberia-3,313 pets

- c. Vermillion-2,228 pets
- d. Cameron-504 pets
- e. Calcasieu-8,845 pets
- f. Total pets in Southwest Louisiana that need evacuation: 14,908 pets
- g. Total pets in Southwest Louisiana that can be transported and sheltered: 7,500 pets
- h. Parish assisted evacuation sheltering deficient (gap): 7408 pets

Parish Responsibilities

It will be the parish's responsibility to identify those people and pets that will require parish assisted transportation prior to June 1. They must also identify parish pick up points (PPP) before June 1. The Parish will establish the following rules for animal evacuation from the PPP.

1. All animals must arrive with a hard sided, identified crate. This crate will be used to store food and medicine after the dog/cat is transferred to the truck for evacuation.
2. Pet owners will be responsible to provide 3 days worth of food and any medicine that the pet requires. All items must be labeled with the full owner's name and LA ID or driver's license number. According to the 2006 State Legislative Session Act 615, the state will not be held liable for any lost items. However, proper labeling will ensure that the pet and its belongings stay together.
3. All pet owners will be required to provide both identification for them and proof of ownership for each pet (rabies vaccination record and the owner's drivers license, for example).
4. Each animal should be microchipped and/or digitally photographed before presenting at the PPP.
 - a. Time and motion studies show that this should not be done at the PPPs. If the animal is registered and will required parish assisted transportation, it is highly recommended that the owner complete the microchipping and pre-identification before the event.
 - b. If the animal does not present with the above requirements, some pre-designed parish plan must be implemented to match the pet to the correct owner: bar coded neck and wrist bands, hand-written bands, color coded bands, etc.
 - c. If the animal is not microchipped or photographed, than proper identification as stated in 2 will be used.
5. The parish will have people to process the owner with the pet and organize the placement of the animal on the vehicle.
 - a. Parish Representatives will receive the animals and all necessary belongings from the owners and load them on to the trucks.

- b. The Parish may be required to provide catch poles, gloves and other safety equipment. All personnel involved in handling these pets should be trained to read Canine and feline body postures to decrease the risk of injury to themselves or others (pamphlets supplied by the American Society for the Prevention of Cruelty to Animals, www.aspca.org)
- c. Parish representatives will fill all water bowls just prior to each truck leaving. It is suggested that plant water cans may be used for ease of watering

Once the truck is loaded, all water bowls are filled, and the doors are closed, the parish's responsibilities are considered complete.

State Responsibilities:

- 1. The state will provide transportation of people and their pets (in separate vehicles) from PPPs to evacuation shelters in other parts of the state. The state will continue to assist with the animal's welfare at various designated shelters. Truck and cage preparation will begin at H-96 hours of landfall through agreements with DOC and LSART according to the disaster time line.
 - a. SART shelters listed as approved pet evacuation shelters shall include:
 - i. MOUs with each shelter and LDAF
 - ii. MOUs with SART and LDAF
 - iii. MOUs with all in and out of state shelter management teams and LDAF
 - iv. MOUs with DOC and LDAF for cage set up
 - v. Prior to and during the evacuation, pre-staging areas, fuel locations, and other resources shall be identified. It has been determined that USDA Animal Care Requirements for animal movement during a declared emergency may be lifted. Those policies, even if lifted, should be adhered to as closely as possible (realizing that an emergency situation exists) include but are not limited to
 - 1. Transporting animals at temperatures not to exceed 85° F.
 - 2. That an animal must be checked by a veterinarian
 - 3. That the type of crates and signage be approved prior to transport.
 - 4. That animals should be cared for and checked on by those transporting them at least every four hours.
 - b. Upon departure, pet owner buses and pet transport vehicles should coordinate to a pre-identified, agreed upon SART evacuation shelter.
 - i. Communication should be made every 4 hours (or time designated) through the (human) Shelter Task Force or other major source of reporting. This will assist with providing capacity limits of these shelters.
 - c. Upon emergency declaration, truck capacity for 7500 animals should be calculated to have one animal per cage to transport between the PPPs and the evacuation shelters. It is understood that multiple pets, such as those

raised in a single family and will comfortably stay in the extra large crates are acceptable. Extra large crates are recommended because they can all house large dogs and also be available for these “family-type” situations. There shall be water available to fill water bowls during transport in instances where they need to be refilled at a 4 hour check point.

Two types of trucks have been identified to participate in the pet evacuation:

1. 53 foot truck

This size truck is capable of carrying 100 extra large crates that measure 2 feet across. If trucks of this size are utilized for evacuation, then 75 trucks, 75 drivers, and 75 water bowls would be required to evacuate 7500 pets.

2. 24 foot truck

This vehicle is capable of carrying 50 extra large crates that measure 2 feet across. If trucks of this size are used, then 150 trucks, 150 drivers, 150 water bowls would be required to evacuate 7500 pets. These smaller trucks may be useful in evacuating smaller parishes. Cleaning time and turn around time must be considered in any situation.

Assumptions:

Extra large crates can carry more than one family pet or one big dog. However, having a variety of sizes decreases configuration arrangements.

DOC prisoners will be setting up and pre configuring trucks and cages. They will be trained by the LA SPCA as to the specific method of retaining the cages into the trucks depending on the truck configuration. They will need sample trucks and cages to conduct disaster exercise training.

Trucks must meet USDA Animal Care requirements, unless there is a declared emergency.

2. The State must have pet evacuation shelters set up by H-96 hours of landfall and preferably near a human population evacuation shelter. (see SART Shelter Manual)
 - a. Proposed shelters for pet evacuation are located in Shreveport, Bossier, Monroe, and Alexandria. These are only hand shake deals to date and are in need of MOUs.
 - b. There are only 1000 wire cages available in the state. We still need to purchase 6500 cages in order to provide shelter for 7500 animals. Possible shelter capacities are as follows:
 - i. Shreveport: 6,000 cages total (200 are there, stored in a connex container)
 - ii. Bossier: 400 cages total (200 are there, stored in a connex container)
 - iii. Monroe: 1000 cages total (some cages are there, but they are not inventoried or owned by the state and cannot be relied on for numbers)
 - iv. Alexandria: 250 cages total (100 are there, stored in a connex container)

- v. Alexandria Ag: 6000 cages total (no cages as of date)
 - c. Man power: each volunteer group comes with an undetermined number of workers. Volunteers from the community will be requested. Owners are responsible for taking care of their own pets twice daily.
 - d. State must provide electricity at the shelter.
 - e. State must provide amenities (food, water, comfort) for both pets and shelter personnel.
3. NOTE: All pets of evacuees being sheltered in a medical special needs shelter, along with any animals that may become separated from owners during the response, and abandoned pets will be housed at DCI so the #2 will also have to occur there.
 4. The State must have a method to receive, process and track (identification) of all animals—see SART manual.
 - a. 3 page intake form for each animal
 - b. Animal care sheet for each animal
 - c. Office supplies, including binders, computers
 - d. Neckbands and wrist bands
 5. State and associated humane group(s) must have a demobilization plan including flea and tick and waste control from the transportation vehicles.
 6. The State must provide sheltering management ability.
 - a. See out of state groups: arrangements being handled by SART, MOUs—see above
 - i. Groups to date include: Noah’s Wish, HSUS, AHA, UAN/EARS, Humane Society of Louisiana (based in MS), Connecticut SART and North Carolina SART
 7. Check in/out, visitation, and abandonment protocols must be established.—See SART manual.
 8. State must provide veterinary service
 - a. Veterinary service initially can be provided by local veterinarians and other LVMA veterinarians, but VMAT, US Public Health or US Army will be needed ASAP.
 9. Security must be provided.
 - a. LDAF Brand Officers can provide some security but other security will be needed.
 10. Safety methods must be documented. (bite protocols)—see SART manual
 11. State must have credentialing of volunteers and identification pet owners.

- a. Credentialing-LDAF Office of Health Services will be credentialing the volunteer groups (including the shelter workers), volunteers, and others.
 - b. The credentialing plan has been attached as a appendix to the State Credentialing Plan.
 - c. Owner identification-see SART manual-neck bands for pets and wrist bands for owners.
12. The State must have method of breaking down and storing components of shelter.
- a. MOU with DOC (DOC labor)
13. State will implement a demobilization plan including flea and tick and waste control for the post storm empty (or emptying) pet shelter.
- a. Must be included in MOU with shelters

Problems/gaps identified

- 1. Legal problems:
 - a. Corporal moveable property—ownership of animals, movement of animals out of state. This is within the civil code.

Synopsis:

Shelters will begin to be set up after it is recognized that people and their pets will be moving out of harm's way. Animals in each parish should be pre-registered if there is a need for City Assisted Evacuation Transportation. Animals will be loaded at a specified site. Registration and owner/pet matching will be done by the parish. The loading will be done by the parish. Vehicles and drivers will be provided by ESF-1, as by tasking by GOHSEP. Animals will be transported to pre-designated shelters with people following. Animals will be unloaded and kenneled by animal groups (animal control, humane organizations). Owners will be responsible for taking care of their own pets. Following the LSART manual, arrangements have been made for displaced, lost, or abandoned animals.

If people show up at the shelters by methods of their own transportation, they will be sheltered as above. All animals in the evacuation shelter shall be cared for by the owner. The LSART manual addresses abandoned and un-owned animals.

This page intentionally left blank.

V. APPENDIX 4 – ESF 11 – MANAGEMENT OF FOREIGN ANIMAL DISEASE AND BIOTERRORISM IN LIVESTOCK

I. PURPOSE

To provide guidance for coordinated communication as well as ongoing activities of state and federal agencies, and private organizations in response to and recovery from an outbreak (intentional or non-intentional) of a Foreign or Emerging Animal Disease within Louisiana. Preparedness and response to a Foreign Animal Disease (FAD) outbreak include prevention of introduction, disease surveillance, rapid identification, initiation of steps to reduce the further spread of the disease, and disposal of infected, exposed, and dead animals during an outbreak.

II. SITUATION AND ASSUMPTIONS

A. Situation

1. Louisiana farmers, foresters, fishermen and ranchers produced almost \$4.4 billion in agricultural commodities at the farm gate price. When these products were processed, the value added brought another \$4.5 billion, for a total contribution of almost \$9 billion. (LSU AgCenter's 2003 Ag Summary Source of Fiscal Information) In Louisiana, the major row crops are sugarcane, cotton, soybeans, rice, sorghum and corn. Our most valuable livestock commodity is poultry and our most valuable plant commodity is forestry/timber.
2. In October 2002, Exotic Newcastle Disease was diagnosed in Southern California. The disease rapidly moved to Arizona and Nevada. Another outbreak was quick stopped just inside the west Texas border. Containing this deadly chicken disease cost taxpayers millions of dollars in lost world trade and birds and bird products.

In 2003, Southeast Asia began to notice an increase in Highly Pathogenic Avian Influenza. Thailand, until the poultry trade was stopped, was the fourth highest exporter. World authorities are extremely concerned about the pandemic potential of this particular strain of avian influenza.

Bovine spongiform encephalopathy has recently been found in a few cows. The implication of BSE within a country has an intense effect on the economy and the public's trust in the food supply. Other diseases such as Foot and Mouth Disease in Great Britain, African Swine Fever in Tanzania, Nipah virus in Bangladesh have had severe animal and human disease impacts in recent months and years.

3. Even though concerns about animal diseases are increasing, the public gives it relatively low priority.

4. The World Organization for Animal Health (OIE) provides worldwide disease reporting services to 167 member countries, including the United States, on the occurrence of certain animal diseases, and establishes guidelines for trade in animals and animal products.

B. Assumptions

1. Acts of terrorism may be directed at the nation's food supply.
2. All veterinarians licensed in the State of Louisiana will report to the State Veterinarian, within 24 hours after diagnosis or tentative diagnoses, the occurrence or suspected occurrence of the following contagious diseases: anthrax, Avian Influenza, brucellosis, equine encephalomyelitis, equine infectious anemia, hog cholera, Infectious Encephalomyelitis, Infectious Laryngotracheitis (other than vaccine induced), Newcastle, Ornithosis (Chlamydiosis), Paramyxovirus (other than Newcastle Disease), pseudorabies, pullorum/typhoid, scabies, scrapie, transmissible spongiform encephalopathies, tuberculosis, vesicular condition or any other disease condition which may seriously threaten the welfare of the livestock and poultry industry.
3. Reports of disease outbreaks shall not be released to the press until after they have been reported to the State Veterinarian.
4. Livestock owners who suspect the occurrence of contagious disease will immediately contact the local practicing veterinarian, area veterinarian or county agent who, in turn, will report to the State Veterinarian.

III. CONCEPT OF OPERATIONS

A. General

The State Veterinarian of the Louisiana Department of Agriculture & Forestry, through its Office of Animal Health Services maintains a working relationship with Louisiana's animal control centers, humane groups and zoological parks. State level partners are the Livestock Market Association, Louisiana Cattlemen's Association, The Racing Commission, the Louisiana State University AgCenter, Louisiana State University School of Veterinary Medicine, Farm Bureau and the Louisiana Veterinary Medical Association. The State Veterinarian has established an excellent working relationship with the United State Department of Agriculture, Animal Plan Health Inspection Service, Veterinary Services (USDA:APHIS:VS).

B. Phases of Management

1. Prevention
 - a. Development and maintenance of surveillance network
 - b. Random testing for disease at stockyards and auctions
2. Mitigation
 - a. Development of mutual aid agreements
 - b. Specialized training and education
 - c. Prevention of disease
3. Preparedness
 - a. Planning, training, and exercises
 - b. Updating and revising plans
 - c. Develop media strategy
4. Response
 - a. Identification of disease
 - b. Disposal of infected, exposed, and dead animals
 - c. Control and eradicate disease
 - d. Maintain records of activities and expenditures
5. Recovery
 - a. Restore equipment and supplies to normal state of readiness
 - b. Continuation of response activities as needed
 - c. Compilation of reports and records

IV. ORGANIZATION AND ASSIGNMENT OF RESPONSIBILITIES

A. General

Most agencies have emergency functions which parallel or complement normal day-to-day functions. Each agency is responsible for developing, maintaining and coordinating its own emergency management procedures.

B. Assignment of Responsibilities

1. Louisiana Department of Agriculture & Forestry (LDAF)
 - a. The Commissioner of LDAF will assign an emergency coordinator.
 - b. LDAF may request activation of the state emergency operations plan in support of an animal health emergency.
 - c. LDAF issues quarantines or hold orders, and oversees the implementation and enforcement of restricted or quarantined areas. (R.S. §3.2095)
 - d. LDAF coordinates with state veterinarians in surrounding states.
 - e. LDAF maintains close contact with USDA:APHIS:VS, the Livestock Market Association, Louisiana Cattlemen's Association, The Racing Commission, the Louisiana State University School of Veterinary Medicine, Farm Bureau, Louisiana Veterinary Medical Association, animal control centers, humane groups and zoological parks.
2. Department of Health & Hospitals (DHH) will:
 - a. Determine if a FAD will affect public health
 - b. Notify the U.S. Centers for Disease Control and Prevention that an outbreak of a FAD has occurred within the boundaries of the state of Louisiana, inform them of the nature of the disease, its primary animal host, and if it is considered to be a health hazard to humans
 - c. Assess the public health risk associated with burial or burning of dead and affected animals
 - d. Maintain close communication between the Public Health Veterinarian and the State Veterinarian.
3. Department of Environmental Quality (DEQ) will:

Advise and assist with the safe disposal of diseased materials. This may include carcasses, medical wastes and protective measures for personnel.

4. Department of Transportation and Development (DOTD) will:
 - a. Assist with road closures
 - b. Assist with safe transport of diseased materials

V. DIRECTION AND CONTROL

LDAF and APHIS will work together in a unified command using State authorities or USDA authorities (CFR 9 § 53.1) as needed to take appropriate actions to minimize the consequences of an outbreak or other emergency. Such a response will be organized using the Incident Command System and will be consistent with the National Incident Management System.

VI. CONTINUITY OF GOVERNMENT

See Basic Plan

VII. ADMINISTRATION AND LOGISTICS

All agencies and organizations will be responsible for maintaining a log of events and expenses. This log and a record of expenses will be made available to GOHSEP.

Resource needs will be requested through GOHSEP. If state resources are expended, additional assistance will be requested through the Emergency Management Assistance Compact (EMAC) or other State to State mutual aid agreement.

VIII. PLAN MAINTENANCE AND DEVELOPMENT

The review and update of this appendix is the responsibility of the Louisiana Department of Agriculture and Forestry in coordination with the veterinary community as well as animal related organizations.

This page intentionally left blank.

APPENDIX 5

MANAGEMENT OF EXOTIC PLANT PESTS AND BIOTERRORISM IN PLANTS

I. PURPOSE

- A. To provide for coordinated measures and procedures designed to detect, control, and eradicate plant pests and diseases as quickly as possible within the State of Louisiana.
- B. To generate immediate, appropriate local, state and federal measures to eliminate the crisis and minimize the consequences in order to return the State of Louisiana to contagion free status.

II. SITUATION

- A. For 2005, the gross farm income from plant, animal, fisheries and wildlife commodities produced in Louisiana totaled \$4.69 billion. The economic value added through further processing, marketing and transportation of those commodities totaled \$5.05 billion – bringing the estimate of Louisiana’s total economic value of agriculture to \$9.74 billion last year. The total value of all plant enterprises was \$2.656 billion in 2005. Value added was \$3.885 billion. Total value of all crop enterprises to the Louisiana economy was \$6.542 billion. The major plant commodities in Louisiana are forestry, sugarcane, cotton, rice, soybeans, feed grains, and nursery crops. In addition, many other crops are grown within the state. These crops are all vulnerable and potential targets of pests or diseases either through natural, accidental, or intentional introduction.
- B. Louisiana agricultural industries are critical to the economic well being of the state’s economy. A major pest or disease outbreak could negatively affect production agriculture and those businesses that depend on it. Export of agricultural products would decrease. Businesses would fail. Tax revenue generated directly and indirectly would diminish dramatically. If the pest or disease spread to other states, it could have a devastating impact on the United States’ ability to compete in the global marketplace.
- C. Response to plant related incidents may involve local, state, federal and other entities. No single local or state agency has the expertise to act

unilaterally, nor do they have the resources necessary to deal with a large-scale situation.

III. ASSUMPTIONS

- A. The identification of incidents or activities impacting plants or crop production within the United States would affect the State of Louisiana.
- B. Positive detection of a pest or disease elsewhere will prompt state officials to employ additional precautions to prevent or mitigate the possibility of an occurrence locally.
- C. There is a potential for the farming community, as well as local and state officials, to receive a threat of a pest or disease as a mechanism of terrorism. They may also witness or be a victim of an event. Any such suspected act or event shall be reported to the Louisiana Department of Agriculture and Forestry, Office of Agricultural and Environmental Sciences.
- D. Numerous local, state and federal agencies will play a role in mitigating an agricultural event. Operations regarding remediation and recovery have the potential to involve a massive amount of resources, due to the sheer volume potential.
- E. Several to numerous associations may play a role. These associations, and their local and national counterparts, have the ability to communicate rapidly with individual members, providing two-way communication regarding pre-planning through emergency response and recovery.
- F. Large quantities of crops and rangeland may need to be destroyed or controlled to prevent the spread of pests or diseases after it has been confirmed within the State.
- G. Vector control may be necessary. Vector-borne diseases can spread very quickly, necessitating quick response over a potentially wide area.
- H. Immediate quarantine areas may be required where suspect or confirmed cases may have originated, and may require special operational procedures.
- I. Eradication of the causative agent will require proper sanitary and disposal procedures for plant materials and/or food and feed. Suspect infected locations and transport vehicles may need to be cleaned and disinfected. Biosecurity guidelines may need to be established.

- J. Environmental protection regulations or procedures may need to be temporarily suspended to allow timely and efficient disposal of food and plant materials.
- K. There are several scenarios under which plant related incidents could affect the State of Louisiana. This could result in the creation and enforcement of movement controls of people, livestock, products, and other property. Possible major scenarios are:
 - 1. Introduction of a non-indigenous plant pest or pathogen. Non-indigenous plant pests or pathogens are those plant pests or diseases not currently found in our state or in the U.S. which might be introduced either intentionally or naturally. Specific pathogens of concern have been identified by USDA/APHIS.
 - 2. Invasive Species. Invasive species are those economically damaging species that have already been found in the United States. Control programs have been established for many of these species. However, the geographic area infested with an invasive species may experience either a natural or intentional escape in areas not presently experiencing infestation. Invasive species include indigenous plant pathogens, noxious weeds, insects, or animals.
 - 3. Genetically Modified (GM) Crops. There are two concerns with GM crops. First, there is the potential that an individual or group would manage to create a GM crop which impacts human or animal health, or the environment. Second, the introduction of a GM crop on a non-GM crop area will potentially contaminate the non-GM crop, making it unmarketable.

IV. CONCEPT OF OPERATIONS

- A. In the planning stage for Emergency Support Function 11 (ESF-11), it is recognized that under some agriculture disaster scenarios, especially those encompassing multiple (hundreds of) sites, the need for resources is tremendous.
- B. Before, during, and immediately following a Governor's emergency proclamation, ESF-11 will be followed when requests for agriculture related assistance are made. When ESF-11 is activated, LDAF, the ESF-11 Coordinator Agency, will provide a representative to serve as the designated ESF Coordinator (ESFC).

- United
- C. Federal agencies may provide support during emergency events. The States Department of Agriculture has the power, in certain circumstances, to declare an emergency.
 - D. Upon State Emergency Operations Center (SEOC) request, the ESFC will be available to respond to requests. The ESFC will identify which participating departments/agencies/associations are needed, and take steps to ensure that the departments/agencies/associations are activated or on alert as appropriate.
 - E. The level of response to an event depends on the extent and severity of that event. The introduction of a major plant or crop pest or highly contagious plant or crop disease could initiate a response from multiple sectors in multiple jurisdictions.

V. ORGANIZATIONAL ROLES AND RESPONSIBILITIES

- A. Louisiana Department of Agriculture and Forestry (LDAF).
 - 1. LDAF is the Coordinator Agency for ESF-11. In the planning stages for ESF-11, LDAF will do the following:
 - a. Develop and maintain a listing of principle contacts of all departments/agencies and association assets available to support a response and/or recovery mission. Volunteer and local agencies may be requested to contribute assets to the response effort.
 - b. Position resources in advance, or when it becomes apparent that resources will be required.
 - c. Develop a preparation/response/recovery plan which includes the logistical requirements necessary to obtain needed equipment.
 - d. Prioritize and develop strategies for a coordinated response.
 - e. Coordinate with support departments/agencies to prioritize and develop strategies for a coordinated response.
 - 2. When ESF-11 is activated, the following operational requests may be made of the ESFC and/or other LDAF personnel. The extent of the response will vary depending on the scope of the disaster or emergency incident and the resources that are available with which to respond. Generally, LDAF will do the following:

- a. The LDAF Assistant Commissioner of Agricultural and Environmental Sciences, or designated alternate, will serve as the Emergency Support Function Coordinator (ESFC) at the Emergency Operation Center (EOC).
- b. Provide overall leadership, coordination, assessment, and technical assistance in response to highly contagious plant diseases and crop contamination.
- c. Provide support departments/agencies/associations with current information concerning locations of outbreaks, and extent of involvement, and available diagnostic information.
- d. The ESFC will identify which participating departments, agencies, and/or associations are needed, and take steps to ensure that they are activated or on alert, as appropriate.
- e. Collect samples and forward to appropriate laboratory.
- f. Provide communication through LDAF Public Information Officer (PIO), including information that may be coming through federal counterparts. Also, the PIO will be the primary contact with other states, through the “Emergency Communications Plan” developed by the Communication Officers of State Departments of Agriculture (COSDA). The purpose of this communications plan is to share critical information with all participating states in a timely manner, in order to better manage the public message in an emergency situation that is regional or national in scope.
- g. Establish communications with appropriate field personnel and ensure that they are ready to respond in a timely manner.
- h. Provide information of local agricultural conditions, resources, and producers.
- i. Accumulate pest/disease information obtained from assessment teams, local emergency operations, and other local, state, and federal agencies.
- j. Prepare and process reports using established procedures.
- k. Continually reassess priorities to address the most critical needs.

- l. Track resources which are committed to specific missions.
 - m. Re-deploy and re-stage resources as appropriate.
 - n. Coordinate movement of any resource that may be needed in order to mitigate an event, and in recovery, from the potential disaster area to the nearest staging area, including evacuation and re-entry of a designated area.
3. LDAF, through the Office of Agricultural and Environmental Sciences, has regulatory authority over crops, plants, feeds, fertilizers, pesticides, weeds, and insect control. Responses are as specified for the major scenarios described above in “Assumptions”.
- a. Introduction of a non-indigenous plant pest or pathogen.
 - 1) Contact/coordinate with USDA/APHIS. Establish command and control, and determine Plant Protection and Quarantine (PPQ) protocol.
 - 2) Contact State Emergency Operations or other agencies as appropriate. Other agencies may include Board of Regents, DEQ, Industry Associations, etc.
 - 3) Contact and activate agency staff and resources as needed.

Quarantine zones may need to be established, traffic monitored or inspected, samples collected and transported to a laboratory or laboratories.
 - 4) Contact laboratory.
 - 5) Work through LDAF, PIO and alert public as needed.
 - b. Invasive Species.
 - 1) Contact/coordinate with USDA/APHIS. Establish command and control, and determine if Plant Protection and Quarantine (PPQ) is required.
 - 2) Contact State Emergency Operations or other agencies as appropriate. This may be on alert status rather than an activation status.
 - 3) Determine spread rate and establish control procedures.

4) Contact laboratory as needed.

5) Work through LDAF, PIO and alert public as needed.

c. Genetically Modified (GM) Crops.

1) Contact/coordinate with USDA/APHIS. Establish command and control, and determine Plant Protection and Quarantine (PPQ) or Biotechnology Regulatory Services (BRS) protocol.

2) Immediate crop quarantine and destruction may be essential in this scenario, so rapid activation of staff, and rapid establishment of a transport quarantine is essential. Rapid contact with LDAF staff and other agency resources is important. Determination of scale of incident needs to happen quickly, and transportation restrictions may need to be made, if needed, to control spread of problem.

3) Contact with LDAF, PIO to establish what information is available, since misinformation is more damaging to economy than no information.

4) Contact laboratory to alert them of analytical needs.

5) Establish control zones and implement crop destruction protocol if warranted.

B. Louisiana Department of Environmental Quality (DEQ).

1. Provide technical assistance in the disaster planning stage to provide necessary disposal practices and procedures.
2. Provide on-site assistance regarding possible environmental issues stemming from disposal and decontamination activities.

C. Louisiana Department of Transportation and Development (DOTD).

1. Provide guidance for re-routing of traffic in and around the affected area.
2. Identify potential traffic control issues and/or needs.
3. Assist with the transport of soil and/or debris.

4. Identify potential sources of outside assistance (i.e., contractors, equipment sources, etc.)

D. Board of Regents.

1. Provide technical assistance in planning stages.
2. Provide surveillance and monitoring assistance in prevention/response/recovery stages.
3. Provide expertise and laboratory services for plant and crop related analytical, diagnostic, and identification needs.

E. United States Department of Agriculture (USDA).

1. Provide technical assistance in planning stages.
2. Provide technical resources and surveillance and monitoring assistance during prevention/response/recovery stages.
3. Provide laboratory services and assistance for plant and crop related analytical, diagnostic, and identification needs.
4. Provide “Emergency Declaration” where necessary.
5. Provide the indemnification process, if available, for costs associated with an incident.

F. Industry Associations (includes Agricultural Consultants, Producer/Professional Associations or Boards, Farm Bureau, etc.)

Industry associations, and their national and local components, are an invaluable resource for emergency prevention, preparation, response, and recovery.

Responsibilities under ESF-11 include:

1. Maintain lists of members, and other significant stakeholders, including lists of potential resources (i.e., transportation equipment; pre-positioning).
2. Provide guidance and advice on site/plant security, potential response activity, and other appropriate information to members, based on industry and LDAF recommendations.
3. Provide information to LDAF regarding technological advances in the industry which may have an impact on handling emergencies.

4. Provide information to LDAF regarding activities which might affect emergency response, including information about specific sites.

VI. AUTHORITY

A. Federal Government.

1. Legal authority for the United States Department of Agriculture for response procedures for plant events, as identified in this Appendix, may be found in The Plant Protection Act of 2000, 7 USC § 7701 *et seq.*

B. State Government (LDAF).

1. Legal authority for the Louisiana Department of Agriculture and Forestry's response procedures as identified in this Appendix may be found in the Crop Pests and Diseases Law, LRS 3:1621 *et seq.*; and Louisiana Administrative Code, Title 7, Agriculture and Animals, Plant Protection and Quarantine, LAC 7:XV.101 *et seq.*

VII. PLAN DEVELOPMENT AND MAINTENANCE

The Review and update of this appendix is the responsibility of the Louisiana Department of Agriculture and Forestry.

WILL BE INSERTED HERE WHEN COMPLETE

APPENDIX
MANAGEMENT OF EXOTIC PLANT PESTS
AND
BIOTERRORISM IN PLANTS

APPENDIX 6
FORESTRY MANAGEMENT IN DISASTERS

Please refer to ESF 4- Firefighting Annex

ESF 11
Louisiana Department of Agriculture and Forestry
Fuel Plan

I. Purpose

This support plan establishes consistent policies, and procedures for the use of the Louisiana Department of Agriculture and Forestry (LDAF) personnel and resources as the primary responsible agency for the distribution of emergency fuel.

II. Scope

This plan will cover procedures for the preparedness and response phases of emergency management. It includes the coordination with the support agencies involved as well as the responsibilities of LDAF covering the whole range of resource management as pertaining to the deliveries of bulk fuel to essential locations in regards to an emergency, event, or incident.

III. Responsibilities

A. Preparedness

1. LDAF will identify and maintain a detailed list of key resources, personnel and equipment so that these can be requested at short notice.
2. LDAF will participate in training and planning and exercising in regards to all hazard events as it pertains to Emergency Bulk Fuel deliveries.

B. Response

1. The Louisiana Department of Agriculture and Forestry will coordinate the delivery of fuel and lubricant as well as necessary storage and dispensing resources for life saving, life supporting, life sustaining emergency response missions as it pertains to a particular declared event, incident or emergency through the State Bulk Fuel Coordinator. The Bulk Fuel Coordinator will utilize existing fueling assets, contracts, and agreements.
2. When requested by GOHSEP, LDAF will mobilize its assets as well as personnel to the required facility (GOHSEP EOC) to facilitate to fulfilling of requested assets and verified locations deemed as one of the aforementioned emergency response needs.

3. Coordinate with LDAF personnel as well as contracted vendor to ensure timely response to an emergency or disaster.
4. Provide Bulk Fuel Coordinator.
5. Coordinate with fuel vendor and support agencies to ascertain most accessible routes for the safe transport of fuels and lubricants.
6. Accept, validate, and respond to fueling needs and ensure that requests follow proper protocol as designated by GOHSEP.
7. Implement fuel tracking and strategic planning activities in conjunction with local, state, and federal entities.

IV. Administration and Logistics

- A. Requests will be forwarded through E-Team.
- B. Records of daily operations will be maintained and reported as required.

H-96

-Fuel to Zephyr Field
(6000 Airline Hwy.)

Diesel

2 Tankers, 1 Bobtail to wet hose the buses. Or mobile unit
POC Erik Smith DOTD 225-636-0321

-Frac tank to Carville (Support Federal Buses)

Diesel

5981 Highway 75, Carville, LA 70712

H-96 -72

H-72

TRANSPORTATION ASSETS ARRIVE AT STAGING AREAS

-Fuel Special Needs Shelters (SNS) generators

-Diesel to contain Anti-Gel fuel conditioner

-All SNS fuel sites accessible by tanker with 1-1.5" spigot

SNS and FEMA SITES

FEMA-AFO Sulphur

901 Prater Rd., Sulphur, LA 70663

Sam Daruvalla 281-691-3203

208kW 150 Gallons

380kW 250 Gallons

FEMA-JFO Baton Rouge

1500 Main Street., Baton Rouge, LA 70802

Kurtis Melnick 917-337-8621

1825kW 1250 Gallons

1250kW 1250 Gallons

FEMA-COOP Site Baton Rouge
LA School for the Visually Impaired
1120 Government Street, Baton Rouge, LA 70802
Janet Ford 225-335- 1058 TBD

FEMA-Warehouse, Harahan
1420 Sam's Ave, Harahan, LA 70123
Suzanne Babcock 817-759-4750
150kW 150 Gallons

FEMA-TRO NOLA
1 Seine Ct., New Orleans LA 70114
Jason Wind 504-202-4690
1825kW 1250 Gallons

FEMA DMORT- Carville
5981 Highway 75, Carville, LA 70712
Renald M Wells 504-202-4838
40kW 100 Gallons
350 kW 500 Gallons
1250kW 1250 Gallons

Nicholls State University (Betsey Ayo Hall)
200 Ardoyne Rd., Thibodaux, LA 70301
Mike Duvas 985-447-0882
800kW 500 Gallons

Heymann Convention Center
1373 S. College Rd., Lafayette, LA 70503
Brent Villemarette 337-943-6386
500kW 500 Gallons

Southeastern Louisiana University Kinesiology Bldg
400 Tennessee Ave., Hammond, LA 70402
Robert Couvillion / Paul Marek 985-549-3333 985-215-4042
400kW 500 Gallons

Louisiana State University Fitness Center
8100 Hwy 71 South (Grady Britt Drive), Alexandria, LA 71302
Christine McGraw 318-623-3808 318-473-6444
800kW 500 Gallons

Bossier Civic Center
620 Benton Road, Bossier City, LA 71111
Richard Dubios 318-741-8360 318-465-5856
1825kW 1250 Gallons

Assumption Community Hospital
135 Highway 402, Napoleonville, LA 70390
Michael Pooley 985-859-4420
400kW 500 Gallons

University of Louisiana Ewing Coliseum
4201 Bon Aire Dr., Monroe, LA 71209
Danney Sledge 318-237-7340 318-366-0431
1500kW 1250 Gallons

Louisiana State University Pete Maravich Assembly Center
N. Stadium Drive, Baton Rouge, LA 70803
Mike Hook 225-578-6540 225-303-2711
1825kW 1250 Gallons

H-60-54

H-54 ASSISTED EVACUATION BEGINS

City of New Orleans

- NOCC (New Orleans Convention Center)

Bobtail with ability to wet hose city assisted evacuation busses / RTA

Diesel

Need POC

Behind or beside NOCC

- UPT (Union Passenger Terminal)

Bobtail with ability to wet hose city assisted evacuation busses / RTA

Diesel

Need POC

Fuel to secondary evacuation bus fueling points

- I-49 Exit 35 Grand Prairie Rest Stop

Need skid tank or wet hose capabilities for buses and Mogas capabilities

-Mega Shelter Shreveport

Hirsch Coliseum

3701 Hudson St. Shreveport

Need skid tank or wet hose capabilities for buses and Mogas capabilities

-Mega Shelter Monroe

State Farm Bldg.

22 State Farm Dr. Monroe

Need skid tank or wet hose capabilities for buses and Mogas capabilities

H-50

Phased evacuation begins

H-48

- Place call to DHH to ensure fueling top off has occurred at health care facilities within the projected landfall area.

LDWF

2000 gallons Mogas for SAR Alpha Teams (8 x 250 gallon)

- Baton Rouge

-Woodworth

National Guard

FMS 8

Baton Rouge Airport

Chief Matthews

10,000 gallons Diesel

2500 gallons + skid Mogas

Camp Villere

Grantham College Rd. Slidell

Sgt Major Bartlett

10,000 gallons Diesel

2500 gallons Mogas (possible skid needed for Mogas)

Hammond Airport

Cptn. Smith 204th Aviation

20,000 gallon Frac tank diesel

2500 / 5000 gallon Mogas + skid

PRE DETERMINED FUELING LOCATIONS

Buses-

I 49 Exit 35 Grand Prairie
Mega Shelter Monroe
Mega Shelter Shreveport
Zephyr Field Staging area
Bulk stations to be identified as landfall H hour is reduced (closer)

Emergency Responders with proper credentials and official vehicles

I 49 Exit 35 Grand Prairie
Zephyr Field Staging area
Bulk stations to be identified as landfall H hour is reduced (closer)
LDAF locations with fueling capabilities

1. Hammond
2. Woodworth
3. Baton Rouge
4. Haughton
5. Monroe

To utilize the LDAF facilities, the driver must be in an official vehicle, have proper identification and sign the log book to assist in asset tracking.

Log Book information

Date
Name
Agency
License Plate #
Drivers License #
Gallons acquired
Fuel Type
Signature

